

Importing Sample Data from Axial into the FA-06/FA-08

Thank you for downloading "EDM HOOKS AND DROPS for FA 1 BANK PACK" for the FA-06/FA-08.

This is audio data for the FA-06/FA-08 sampler section. It contains 16 audio phrases.

Contents

1. SMPL Folder
This folder contains audio data for the FA-06/FA-08.
2. EHD_1BANK_SoundList.pdf
This is the sound list.
3. EHD_1BANK_Readme_e.pdf
This is the file you're reading.

Important

Before importing these samples, please take a backup of your SD card by copying your data to a computer. Importing these samples may overwrite your data if you already imported and/or recorded other samples to your SD card.

How to Import the Samples

There are two ways to import the samples.

A. Importing the Samples to a New Song

1. Insert the SD card into the FA-06/FA-08.
2. While holding the SHIFT button in the SEQUENCER screen, press [3] (Song Util).



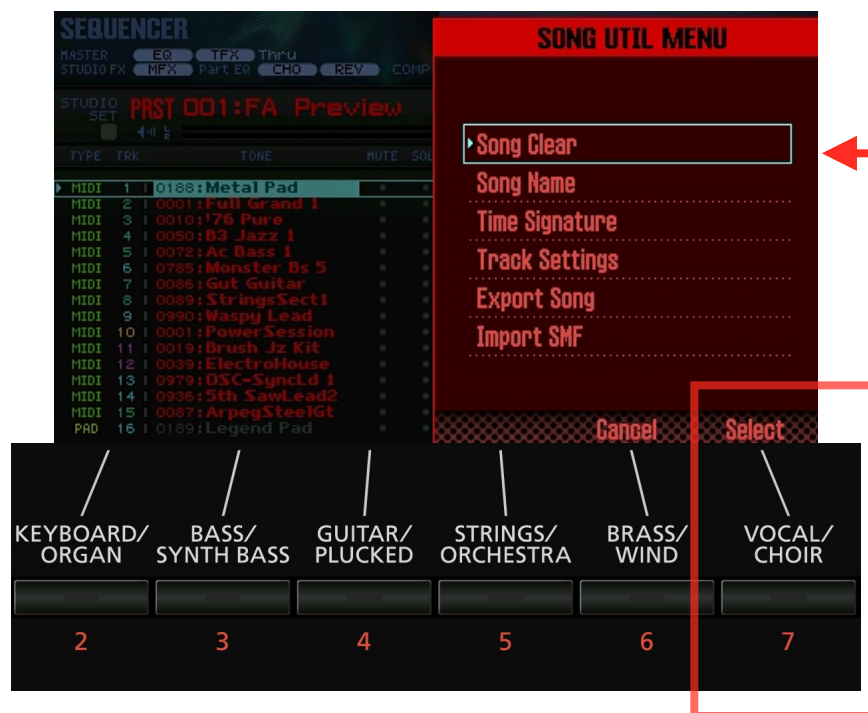
Press [3] (Song Util).

While holding the SHIFT button ...

TIP

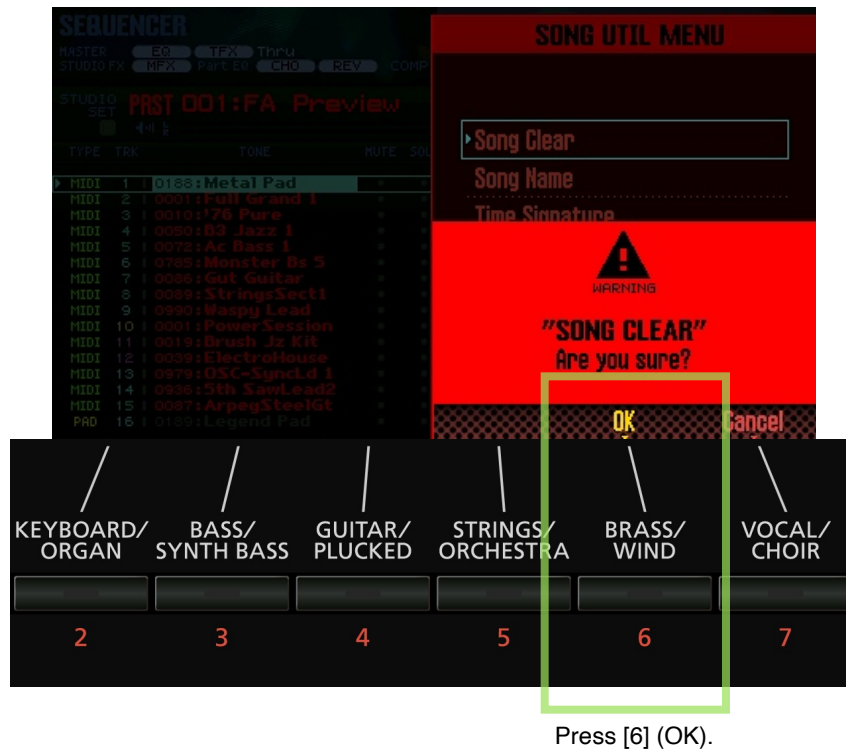
To go to the SEQUENCER screen, press the SEQUENCER button.

3. Select "Song Clear" and press [7] (Select). Then press [6] (OK).

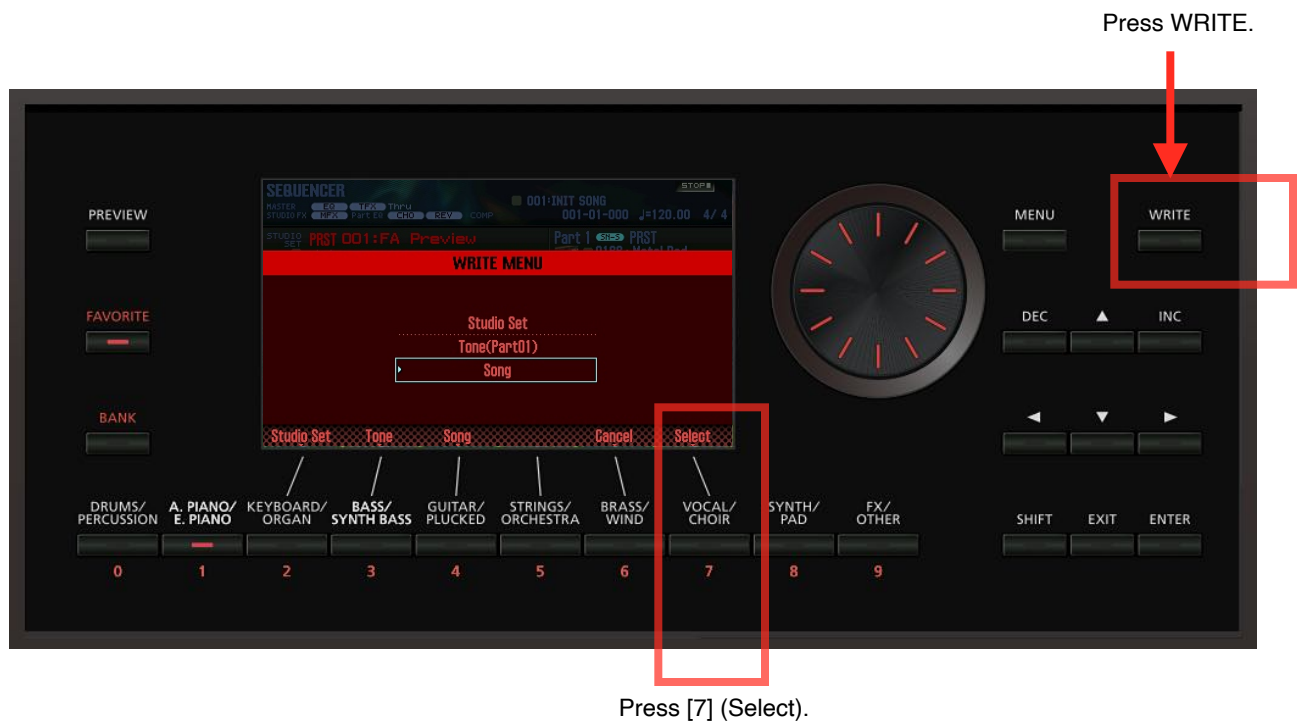


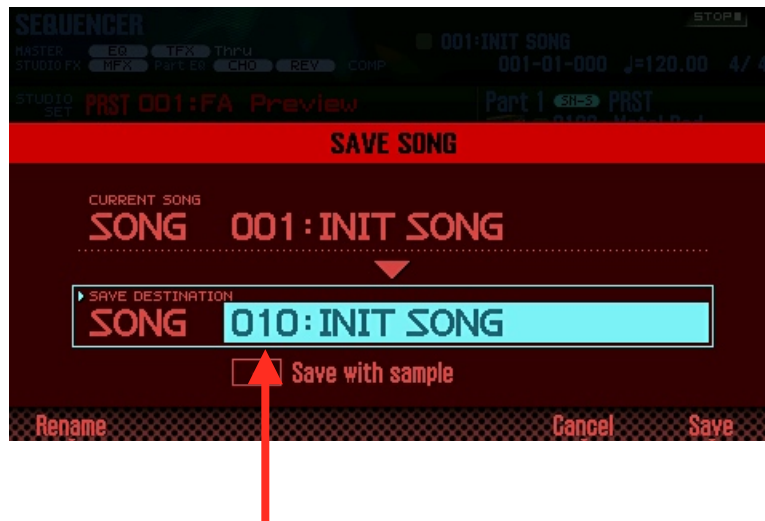
Select "Song Clear".

Press [7] (Select).

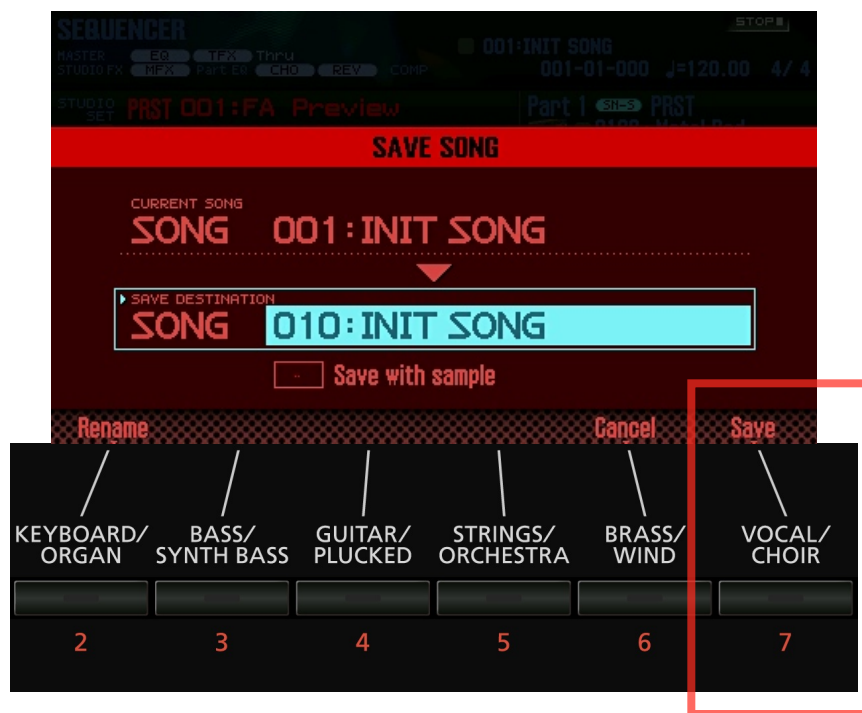


- Press WRITE, select "Song", press [7] (Select), and then select a SONG number that you want to use the samples with.





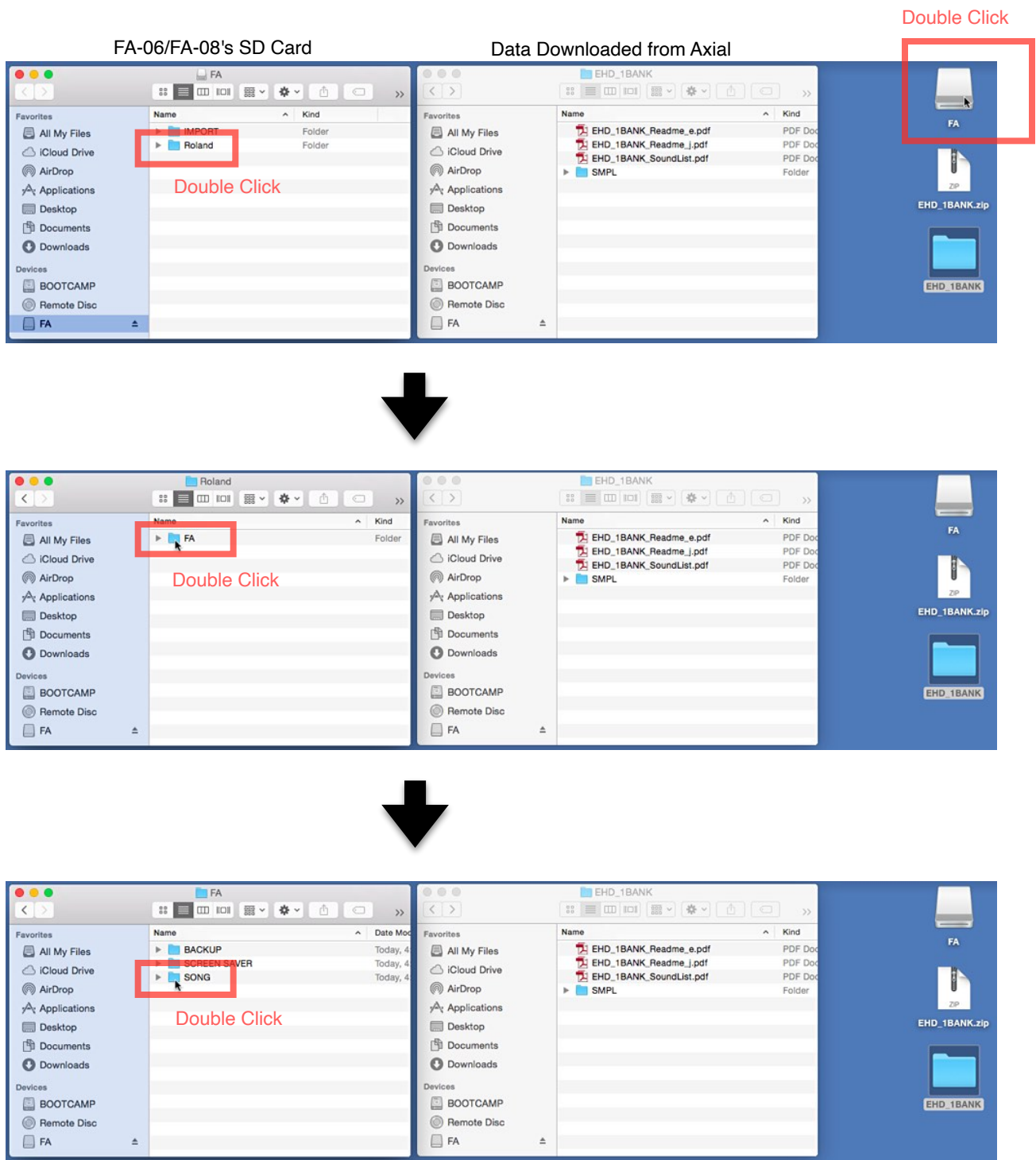
Choose a song number that you want use the samples with.



Press [7] (Save).

5. After you're done saving, remove the SD card.
6. Insert the SD card into your computer. If your computer doesn't have a SD card slot, you will need a separately sold SD card reader.

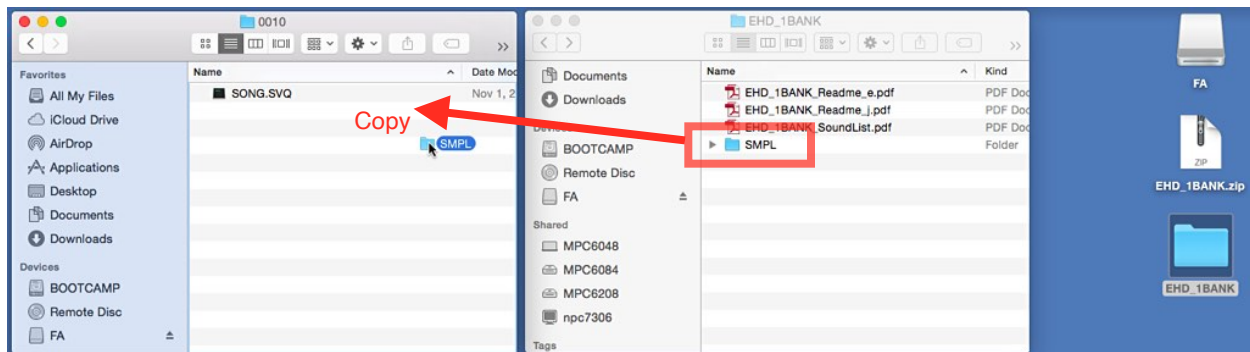
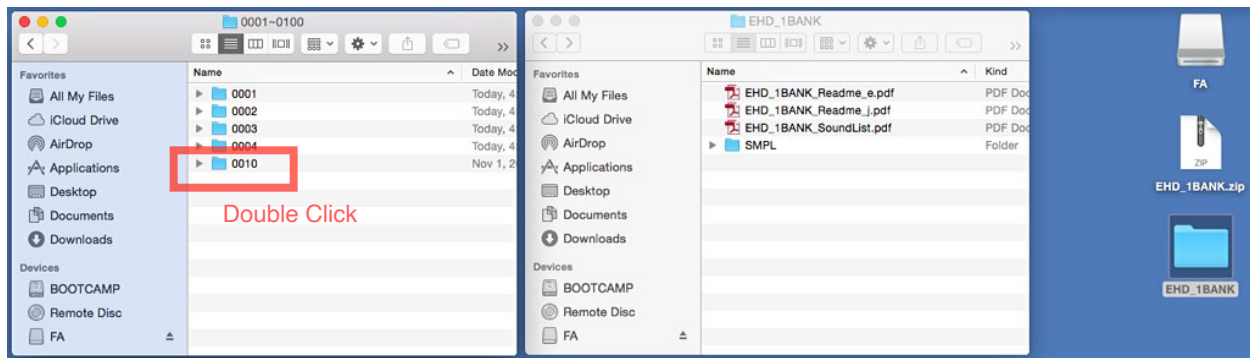
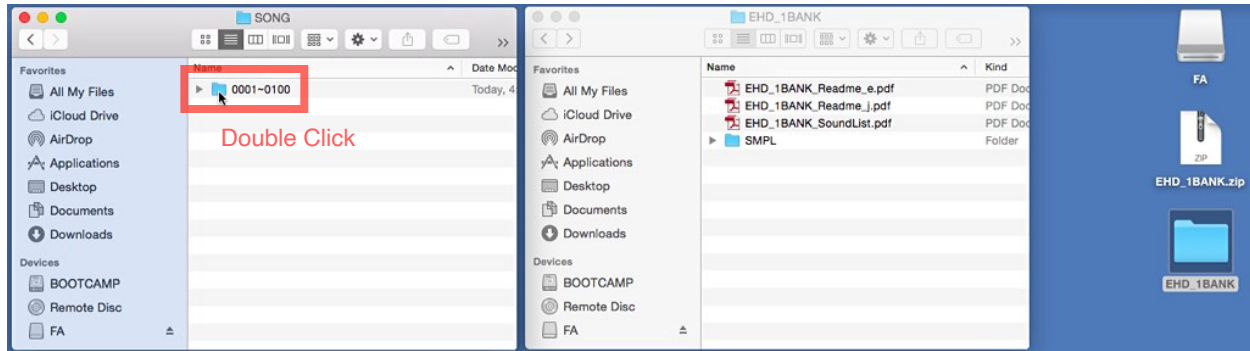
7. Open the SD card, the "Roland" folder, the "FA" folder, and then the "SONG" folder.



8. Copy the SMPL folder into the folder with the number that you selected in step 4. For example, if you selected song 010, open the "0001~0100" folder and then "0010" folder. (The following screenshots are examples. The actual folder numbers depend on which number you saved your song.)

FA-06/FA-08's SD Card

Data Downloaded from Axial



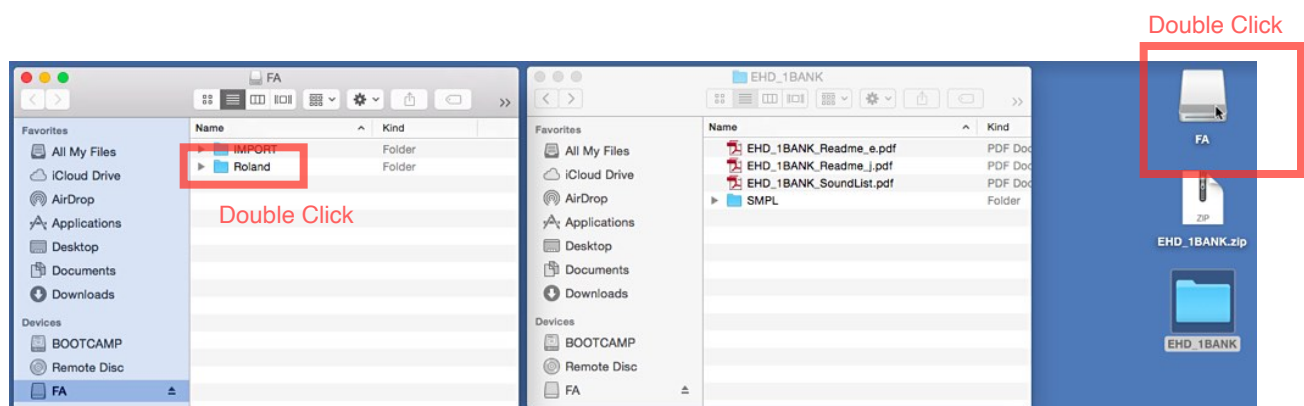
9. After copying the SMPL folder, eject the SD card from your computer.
10. Insert the SD card into the FA-06/FA-08.
11. Press SONG SELECT and then [7] (Load).

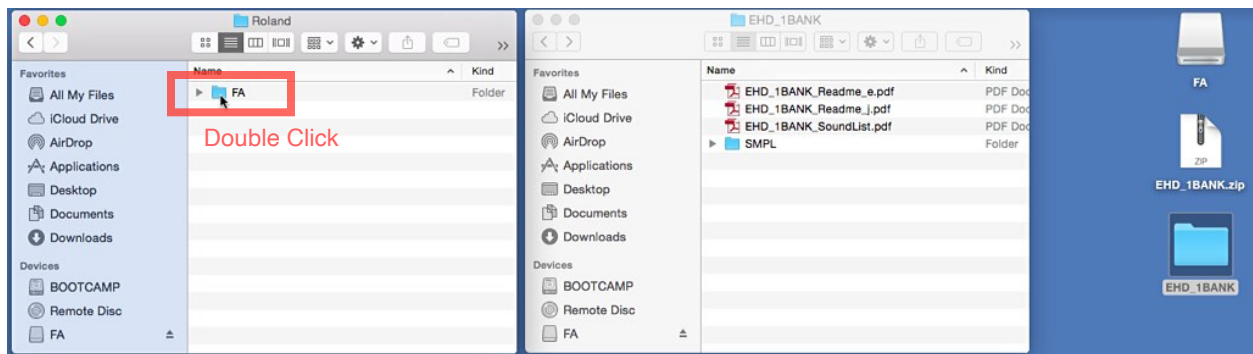
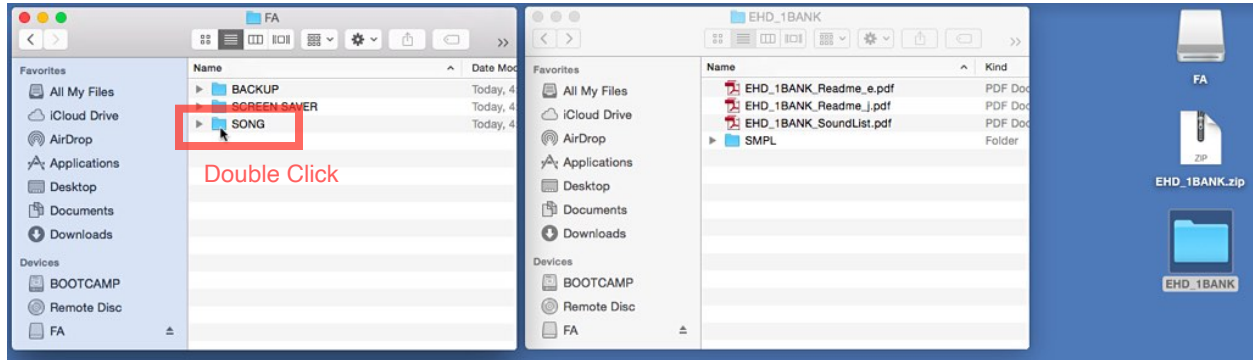


12. Press the pads to play the samples.

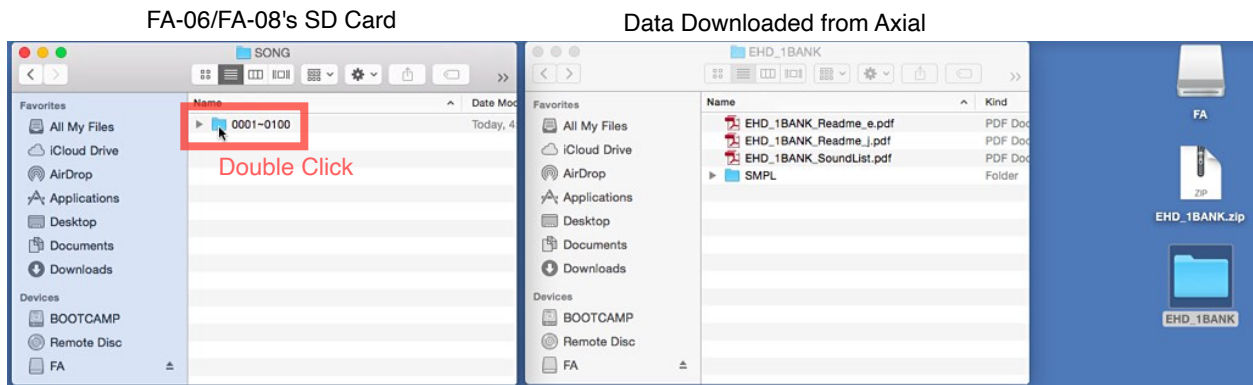
B. Importing the Samples to a Current Song

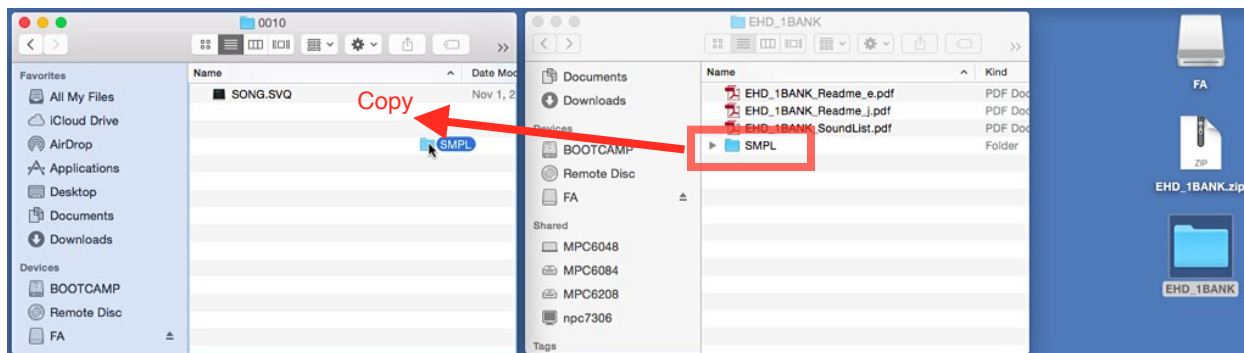
1. Insert the SD card into your computer. If your computer doesn't have a SD card slot, you will need a separately sold SD card reader.
2. Open the SD card, the "Roland" folder, the "FA" folder, and then the "SONG" folder.





3. Copy the SMPL folder into the folder of your current song. For example, if you want to use the samples for song 010, open the "0001~0100" folder and then "0010" folder. This will overwrite your existing samples so please make sure to copy any important data to your computer.

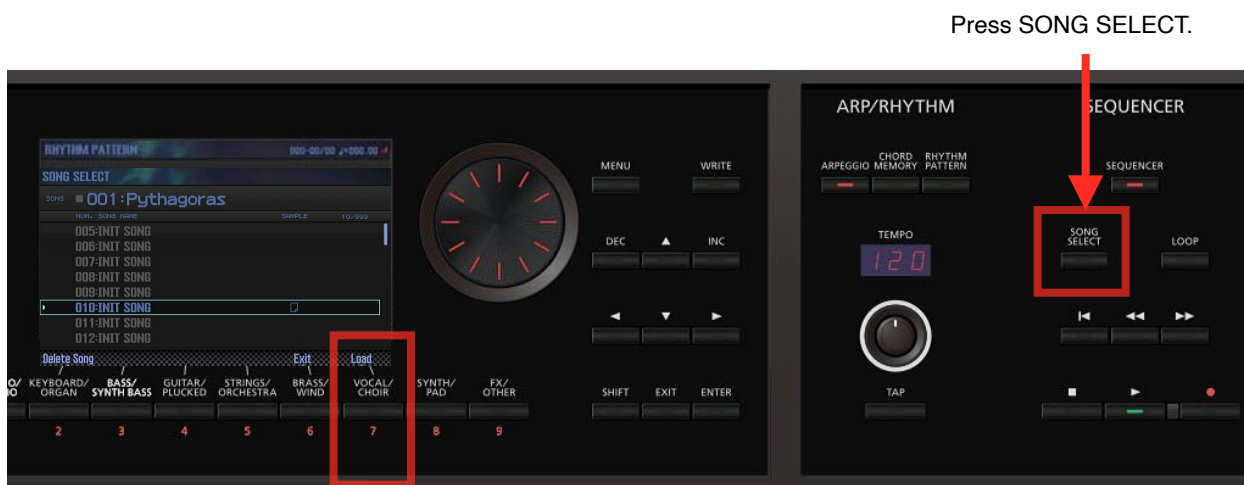




4. After copying the SMPL folder, eject the SD card from your computer.

5. Insert the SD card into the FA-06/FA-08.

6. Press SONG SELECT and [7] (Load).



Press [7] (Load).

7. Press the pads to play the samples.

Copyright

Copyright of this data and the accompanying documentation is a property of Roland Corporation.

Disclaimers

- This sound data is provided as an after-sales service for the FA-06/FA-08.
- Roland Corporation accepts no responsibility for any damages that may arise from the use of this data.
- The copyright of the sounds is owned by CRYPTON FUTURE MEDIA, INC (licensor) and/or creators that the licensor have partnered with. Roland Corporation owns the copyright of the documents.

Date: December.25,2015